

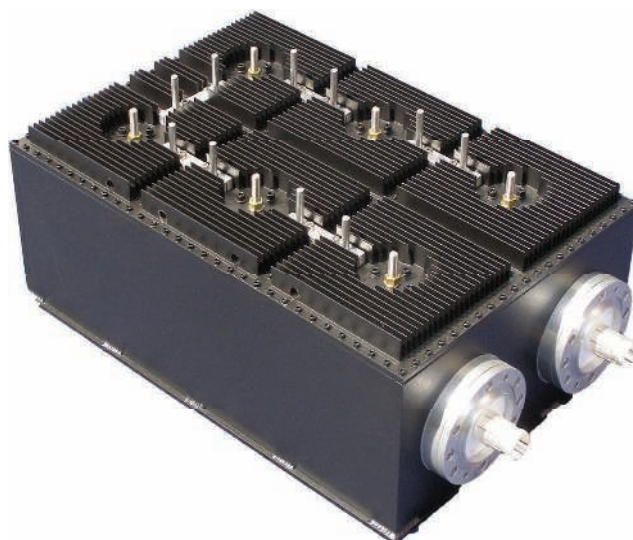
ADB-CEC-386-UM

5kW Avg, UHF 8"/203.2mm Mask Filter
ATSC/DVB-T/ISDB-T



Product Description

The ADB-CEC-DF6-UM 8"/203.2mm Mask Filter is designed to provide superior mask filter performance at an affordable price. Cross coupling creates steep rejection skirts and the high-Q cavities provide low passband insertion loss in a compact design.



TYPICAL DVB-T SPECIFICATIONS

FREQUENCY	470-860 MHz
BANDWIDTH	$F_c \pm 3.80$ MHz
INSERTION LOSS	
F_c	0.25 dB
$F_c \pm 3.80$ MHz	0.50 dB
VSWR	1.12:1
REJECTION	
$F_c \pm 4.2$ MHz	4 dB
$F_c \pm 6.0$ MHz	18 dB
$F_c \pm 12$ MHz	35 dB
GROUP DELAY	300 ns
CONNECTORS	3-1/8" male

TYPICAL ISDB-T SPECIFICATIONS

FREQUENCY	470-860 MHz
BANDWIDTH	$F_c \pm 2.79$ MHz
VSWR	1.10:1
CONNECTORS	3-1/8" male

TYPICAL ATSC SPECIFICATIONS

FREQUENCY	470-860 MHz
BANDWIDTH	$F_c \pm 2.69$ MHz
INSERTION LOSS	
F_c	0.25 dB
$F_c \pm 2.69$ MHz	0.35 dB
VSWR	1.10:1
REJECTION	
$F_c \pm 3.5$ MHz	8 dB
$F_c \pm 4.0$ MHz	18 dB
$F_c \pm 9$ MHz	36 dB
GROUP DELAY	250 ns
CONNECTORS	3-1/8" male

Alan Dick Broadcast Ltd

Design, supply & manufacture communication infrastructure systems on a global scale by offering products and services for Wireless networks.

• Americas • Asia Pacific • Europe • Middle East

© Alan Dick Broadcast Ltd

www.alandickbroadcast.com